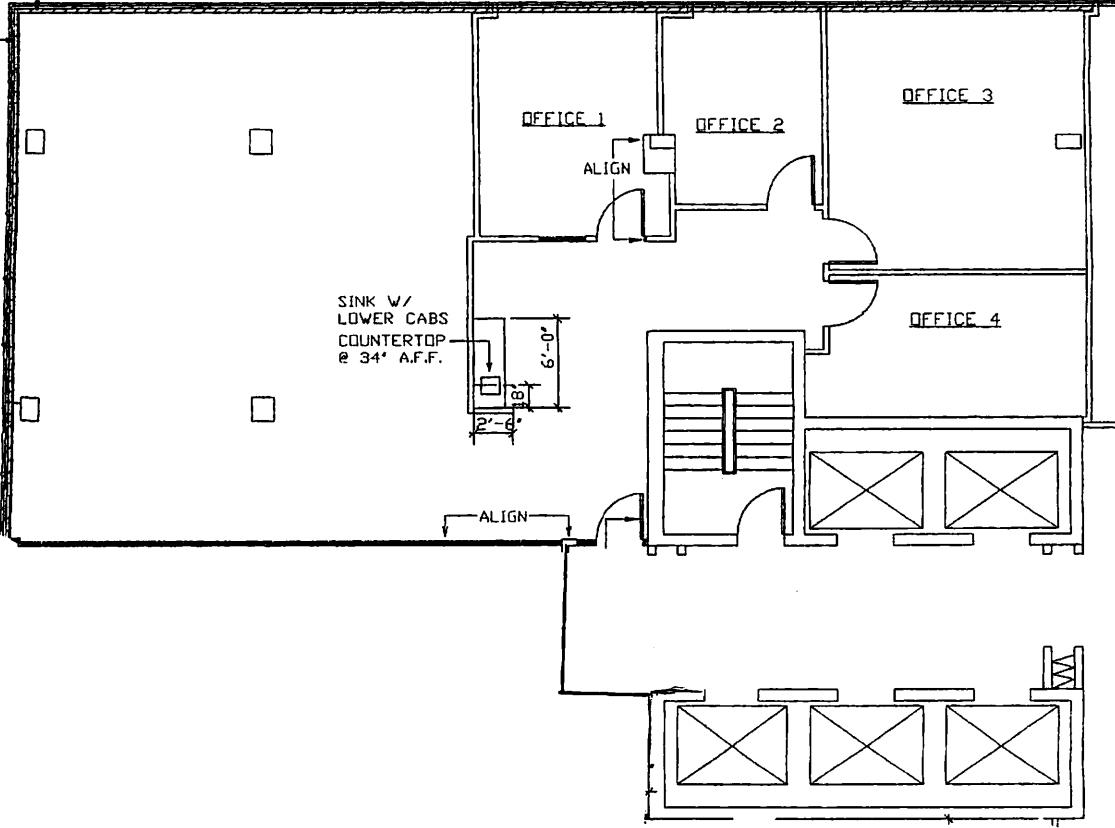


ADD 3-1/2" DRYWALL  
TO WINDOW WALL  
BELOW WINDOW TO  
35' A.F.F.



==== EXISTING WALLS  
—— NEW WALLS

# SUITE 1400

## FLOOR PLAN

5455 WILSHIRE BLVD., L.A., CA.

1/8" = 1'-0"

F: 5455W-1402W

10/26/04

NOTE: ALL NEW DOORS TO BE 3'-0" X 7'-0"+/- (VERIFY) WITH  
HANDICAP HARDWARE WITHOUT CLOSURES EXCEPT FOR RATED DOORS



11/1/04